



Customer Service Call us at:

1-877-844-5510 or

email: info@thebadgerhead.com

SAFETY INFORMATION

Warning! - Before each use and periodically during use, inspect your trimmer head and cut medium for damage or disrepair. Do not continue use if anything is damaged or broken.

Warning! - Always wear safety glasses or goggles and gloves when using a weed trimmer. Wear long pants and sturdy shoes and do not wear loose clothing. Avoid hearing loss by wearing hearing protection. Eye protection meeting ANSI Z87 (or your national standard) is recommended. **Failure to wear proper eye protection can result in blindness.**

Warning! - Do Not Exceed 10,000 RPM.

Warning! - If excessive vibration occurs during use or if the trimmer head becomes damaged, stop using immediately.

Warning! - Prior to starting, inspect the work area and pick up all loose objects that could be thrown by the weed trimmer. **Always operate the weed trimmer with the cutting head below the waist** and avoid overreaching with a weed trimmer.

Warning! - Keep bystanders and pets away at a minimum of 50 feet during operation.

Warning! - Keep feet and hands away from trimmer head while operating.

Warning! - Never change cutting mediums while the engine is running.

Warning! - Follow all guidelines of weed trimmer manufacturer for safe operation and never operate trimmer without proper OEM guards and safeties in place.

Warning! - Only use hardware supplied with your unit.

Warning! - Use only cut medium and/or attachments designed for use in weed trimmers and follow manufacturers guidelines for proper use.

Warning! - Trimmer head rotates at high speed during use. Contact with solid foreign objects such as rocks, may cause objects to ricochet in direction of operator or bystanders. Striking such objects could damage the trimmer head and/or cut medium.

Thrown objects, including damaged head or cut medium, may result in serious or fatal injury to the operator or bystander. Use trimmer head equipped with proper cut medium only for cutting grass and similar material.

INSTALLATION TYPE 1: NON-HEX DRIVE

NON-HEX INSTALLATION INSTRUCTIONS:
(Most straight shafts and some curved shafts)

1. Remove OEM trimmer head (not shown). Typical removal requires a small screw driver or allen wrench be inserted into a hole on top of drive head. Trimmer head can then be rotated off the threaded shaft. Some models may have a shaft extension which should also be removed by unscrewing. Some trimmers have a metal dust cover which should remain on the unit.

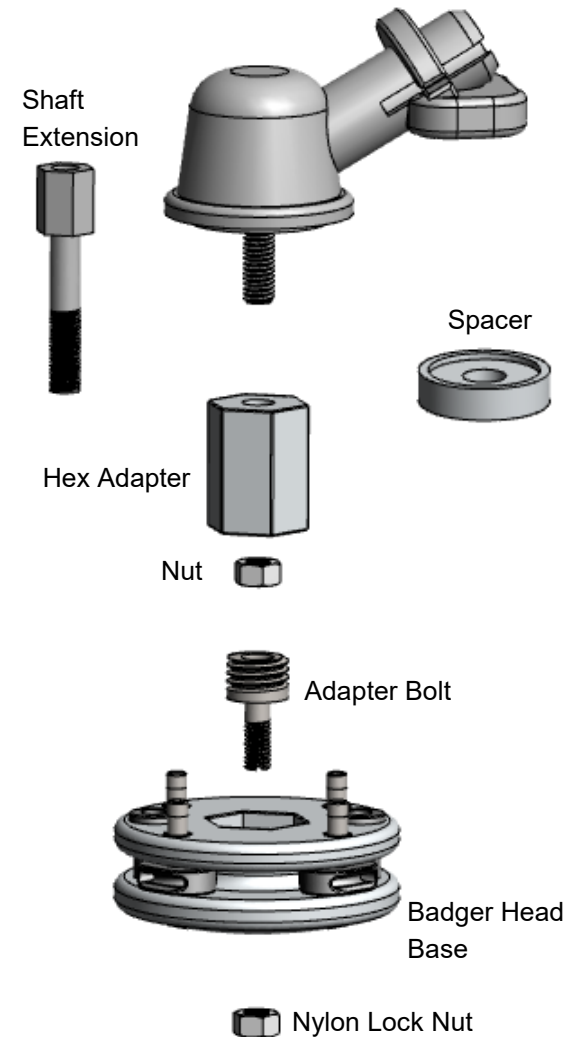
2. Identify from nuts provided with kit, which nut threads easily onto the OEM shaft. Please note, some trimmer shafts are reverse threaded and must be tightened counter-clockwise.

3. Using identified nut, locate Hex Adapter with internal hex pocket. Place nut into Hex pocket on inside of Hex Adapter. Make sure nut is fully seated and then insert Adapter Bolt and tighten with flat head screw driver (avoid overtightening).

4. With nut and adapter bolt installed, thread complete Hex Adapter assembly onto OEM shaft and tighten. Most installations require the use of the enclosed Spacer between Hex and drive head face (lip facing towards drive).

5. Install Badger Head base onto the Hex Adapter assembly and tighten using supplied Nylon Lock Nut.

Warning! After proper installation and final tightening, the trimmer head should not have any up or down movement on the shaft. If there is a gap or movement, an additional washer should be used. Also, the Adapter Bolt should extend through the Badger Head base with enough thread to fully install the Nylon Lock Nut.



For more information or assistance:

Instructional installation videos can be seen by visiting www.thebadgerhead.com/support.



Customer Service

Call us at:

1-877-844-5510 or

email: info@thebadgerhead.com

INSTALLATION TYPE 1: NON-HEX DRIVE

Supplemental installation pictures

Step 1



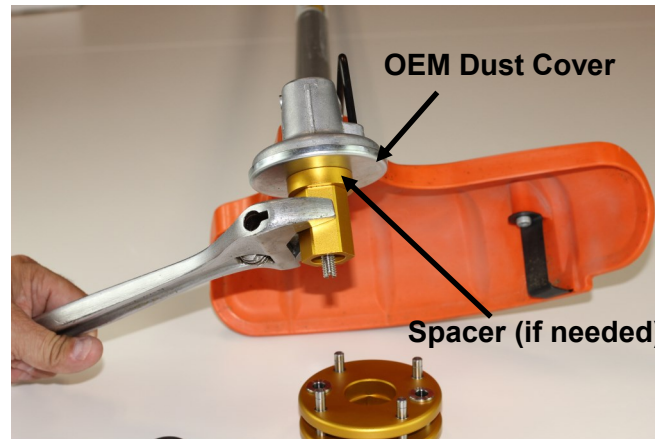
Step 1



Step 2 & 3



Step 4



Step 5

